

才通讯 中国建市

• 中国建材集团有限公司主办 • 2020年第3期(总150期) • 内部资料 免费交流



抗疫 稳岗 扶贫 扩就业

彭华岗到中国建材集团调研指导国企改革工作
中国建材集团召开总部机构定编工作会

准印证号:京内新登字0819-L0074号

集团“4335”指导原则

4



3



3



5



总部“4335”指导原则

4



3



3



5





Contents

2020 3 150



	17	1	4335	
2				
100036				
010- 68138115				
010- 68138116				
<hr/>				
		4		
zhgjctx@126.com		5		
		6		
10		7		
2000		8	/	
		9		
<hr/>				
		10		500
		11	2019	
		12	2020	
		13	2020	





14

“ ”

42

45

&

46 50

5

21

25

26

47

8

“ ”

34

4335

4335

41



4335



“ ”

“ ”

“ 4335”

“ 4335”

“ ”

/



600

“ ”

600

“ ” “ ”





“ ”

“

“ ” “ ”

”

“

”

“ ”

“ ”

“ ”

“ 4335”

“

” “ ”





/

“ ”

| a

2019

2019

“ ” “ ”

”

2004 2019

30.6%

2019

“

” “ ”

“ ”



500

2019

353



Brand Finance
Brand Finance Global 500 2020 2019

500
353

2019

“ 4335”

“ ”

60

9

500
6100

“ ”

3800

20

13

2

3.8

26

12500

5

65%

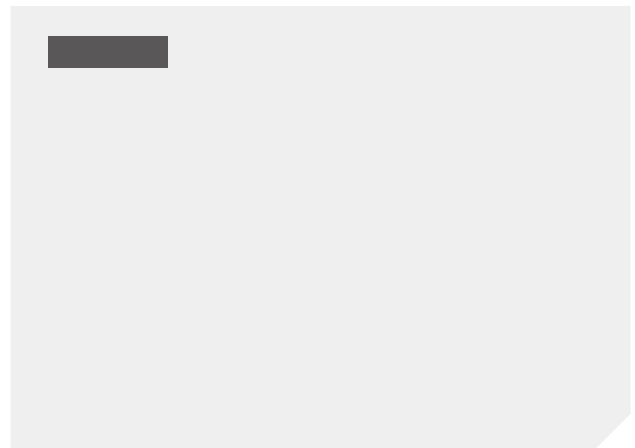
/

2019

100

()

100





	2019	HK3323	“
2019		2,534	
15.7%	274.5	35.9%	
633.5	31.0%		109.7
	38.4%	3.91	
6.0%	1.12	16.5%	
5,238	48.5%	19.66	
5.2%	248		12.1%



2020



2020

2019

2019

2020

2019

“ ”

“ ”

“ ”
“ ”

2020

2020

800

53



2020

4335



“ ”

“ 4335”

“ 4335”

“ 4335”

“ 4335”

“ 4335”

35



抗疫 稳岗 扶贫 扩就业

中国建材集团勇担责任助力经济社会发展

“ ” “ ” “ ” “ ” “ ”







5

12

2019

2020



150

80



2020

BOSS

QQ

+



2020

H5

2020

30

4

20

1- 3

2545

2574

362

197

2183

2377

2662

6204

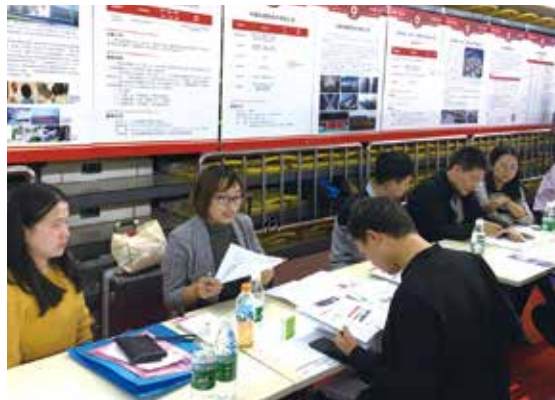
1021

2520

1641

3684

2010 10
- 11
300 400
2019 2020
5 5
2013 5
350



A large-scale industrial construction site featuring a complex network of yellow and blue scaffolding. In the foreground, a massive, thick-walled metal pipe is being hoisted by a crane. The background shows a tall, cylindrical industrial structure under construction. The scene is filled with industrial equipment, pipes, and structural elements, all set against a clear sky. The overall atmosphere is one of active industrial development and engineering.

疫情防控&生产经营 两手抓两不误

2



3

33

23

2

2 23



6

Sinoma 85.6- 8MW
8.0MW



4

15 3 100% 6 3
14 93%
17.53% 221%
TIM
VPN ERP MES
4 9 OA
LZ62- 5.0
6
25000
3 7 7815
20



70

同欣
博雅



2 26

20

3

24

3 27

3

2

EF9



14



221 SOLARA4





3

3 30
SCP



3 31



3 24



-
-
-

4

)'

43K3:

2020 3 18

8 8

EPC

BAYAH



\$%

475: 3D



1 22

BECHAR

BECHAR

3200

23

/

\$\$

2 28

1

22



##

2

1500

#)

>[Vae

2 21 5 10

Lindos

3 9

17 4 7

PAC



3 30

5500m²

37m

90

3

24



#) \$) %+

()

99.66%

172739

2020 3
2015 3

24



) " " " "

<EI

JSW

7

2 26



5

2000

800

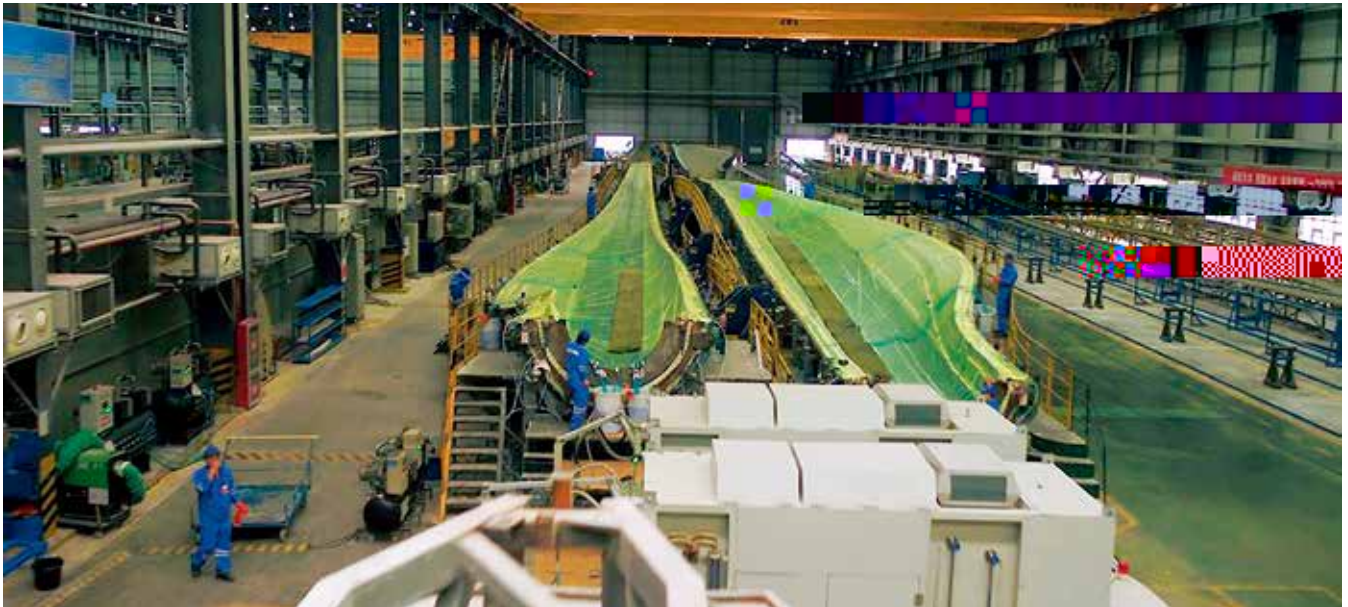
42



强化经营理念 锤炼管理能力 推动高质量发展

12 12 4000 " "

9 835 2015



42% 52% 110%

3 27%

12

2019 +

2017
13 7 46%

25% 8 6
1

6

2422

99%

7

2019
7.8GW

3223
42% 2019

52.5%
110%

51.63
4

25%

2019

1.8MW/

19% 33%
61.5 V

53%

6

A+

120

1

EHS 10

6

4

OA

-

CTQ

14

CTQ

6S

TPM

TPM
TPM

6S

2019

863

2011

20%

90%

100%

TM

HMG

6

IT

2019

2012

ERP SRM

MES

APP

A B

7% C

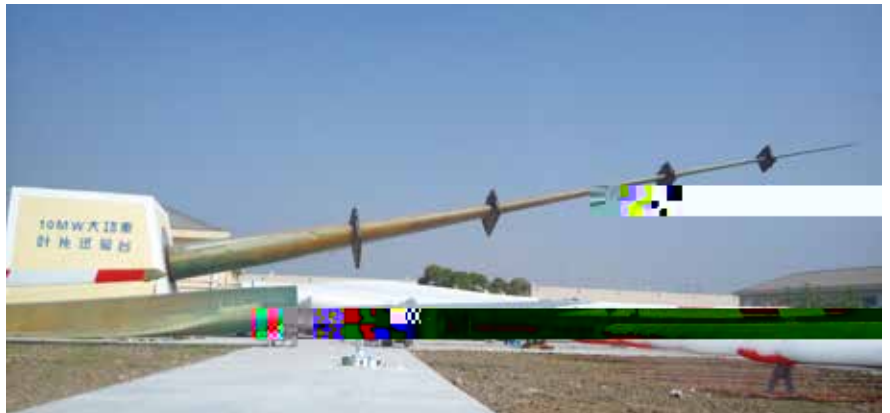
10%

97%

95%

98.5%

ECN
Sinoma68.6
Sinoma72 Sinoma75
2014
77.7
68.6m 72m 75m 85.6m
3MW - 8MW



2019
8MW - 85.6m

	2014	16	2
CNAS		5	9
5		WindTask29	IEA
2017			10
10MW - 120m		6	30

	2018	GL	
			6
			100
IEC	GLPS		
	GL		
	101	40%	

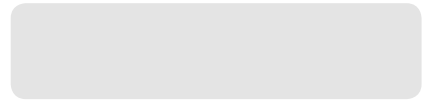
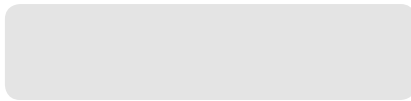
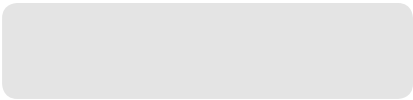
VG
0.5 2.1%

10%

5%

10%

5



5400

36 20
69





1 21

2 1

3

5

24

Q

X

3

2500



3 16

10

100

.....

3

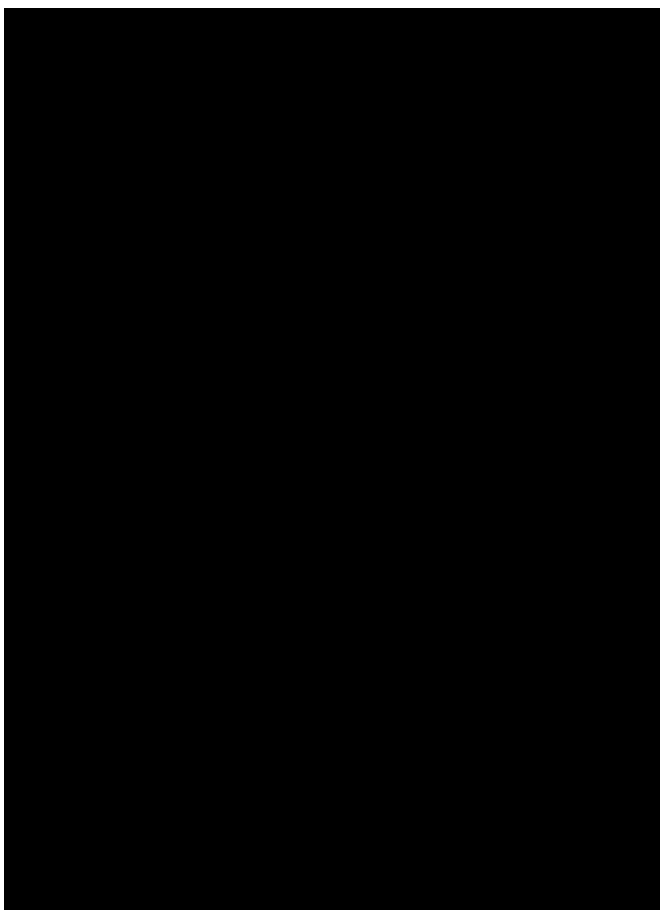


3 24

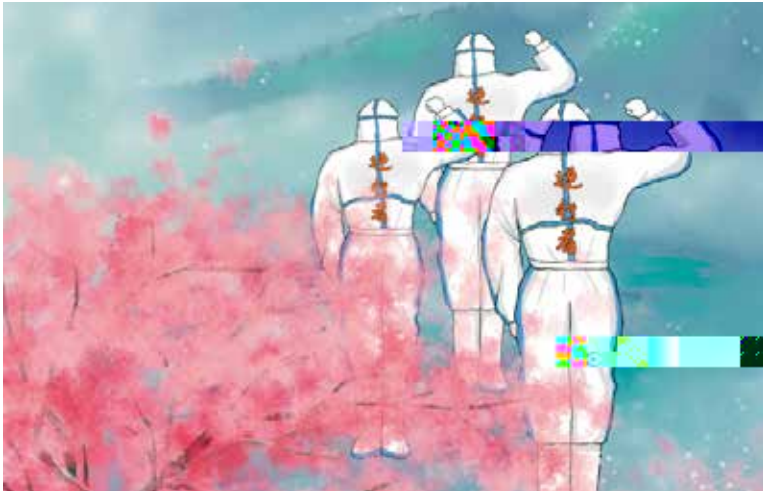
3 30

3 29





JSW



BIM

JSW



